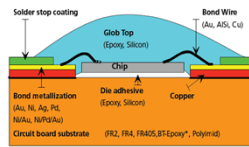


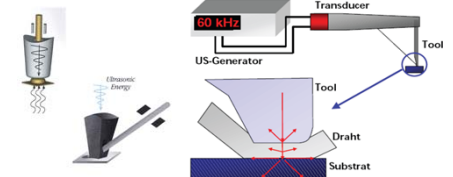
## Principe

Cablage dans boîtier  
ou sur carte  
(Chip On Board COB)



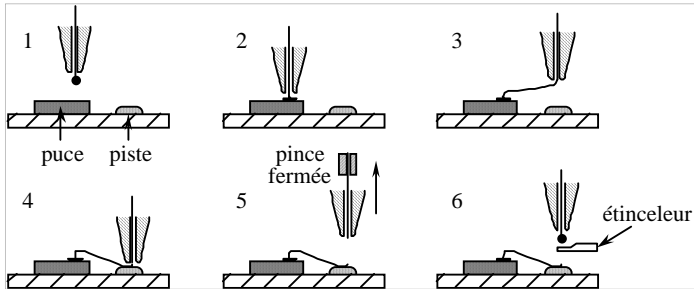
### Liaison métallurgique par diffusion

- Thermocompression
- Ultrasonique
- Thermosonique



### Outil et sonotrode

## Ball-stitch



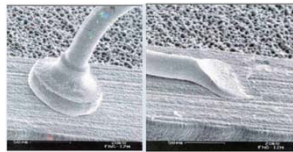
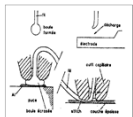
### Cycle de câblage



Câbleuse Ball K&S 4524

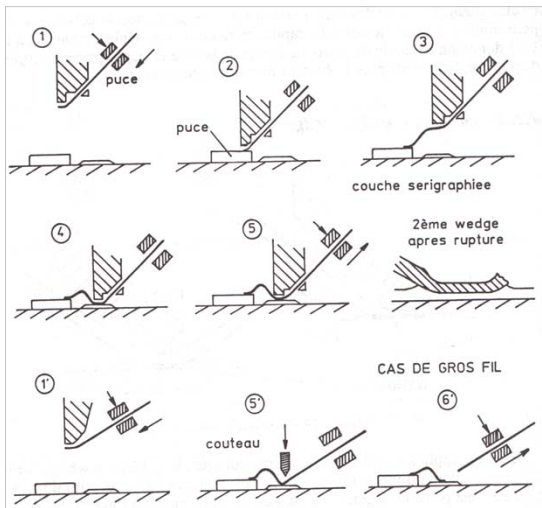
### Caractéristiques

- Thermosonique (120°C-150°C)
- Fils Au 17-33µm
- Omni-directionnel

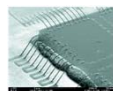
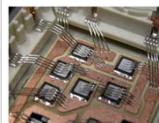


Capillaire Al<sub>2</sub>O<sub>3</sub>

## Wedge-wedge



### Cycle de câblage



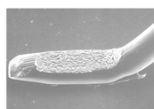
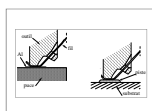
Câbleuse Wedge Orthodyne  
Gros fils



Câbleuse Wedge K&S 4523  
Petits fils

### Caractéristiques

- Ultrasonique
- Fils Al 17-300 µm
- Unidirectionnel



Wedge WC