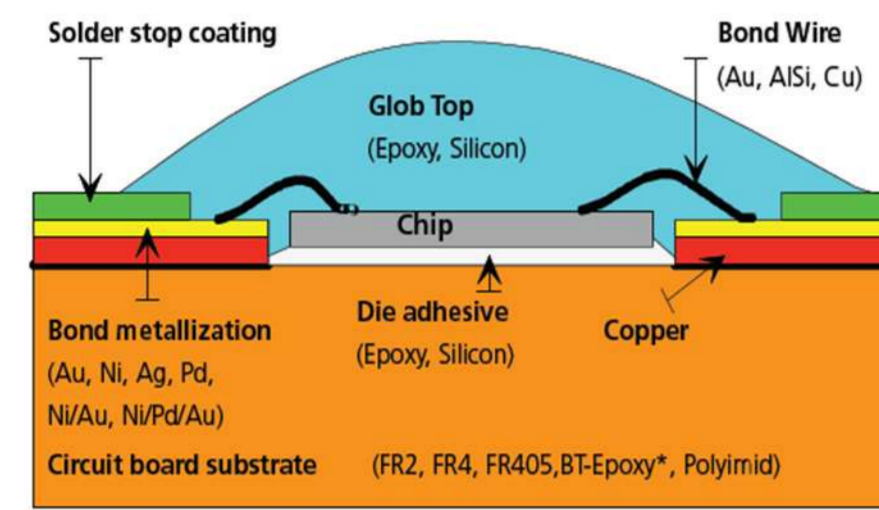


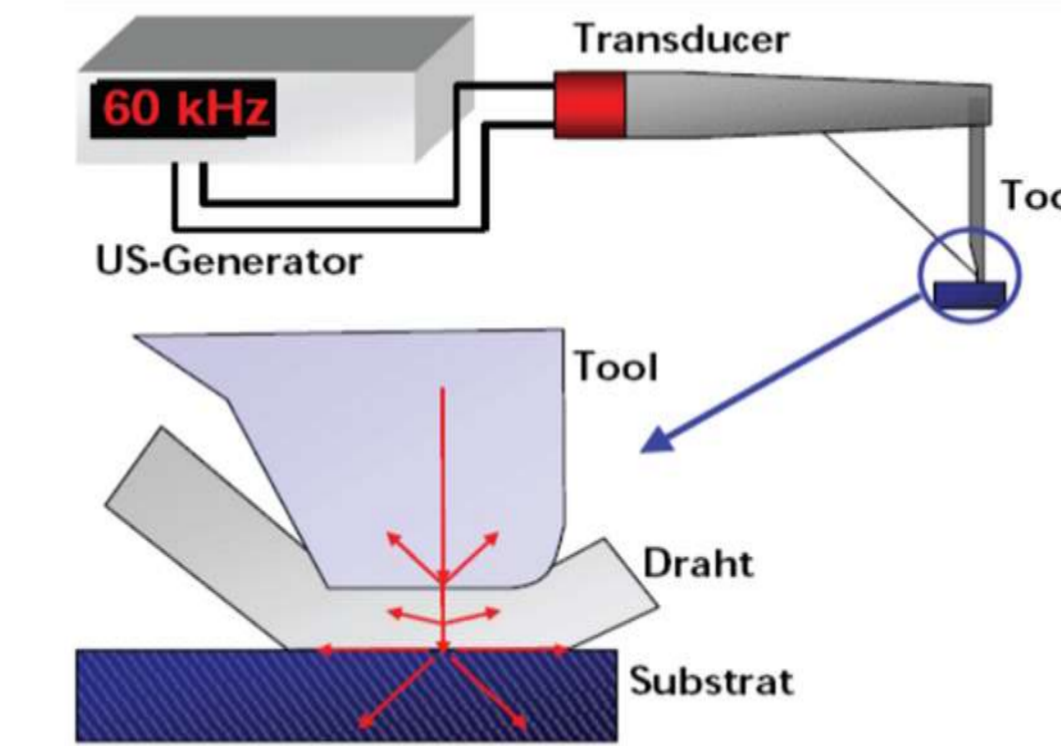
Principe

Cablage dans boîtier
ou sur carte
(Chip On Board COB)

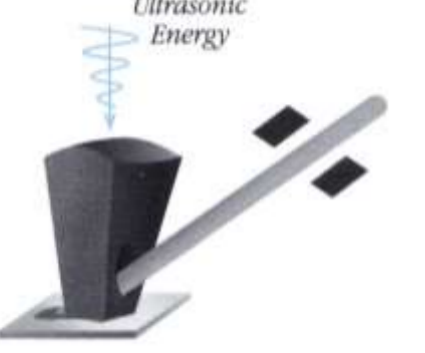


Liaison métallurgique par diffusion

- Thermocompression
- Ultrasonique
- Thermosonique

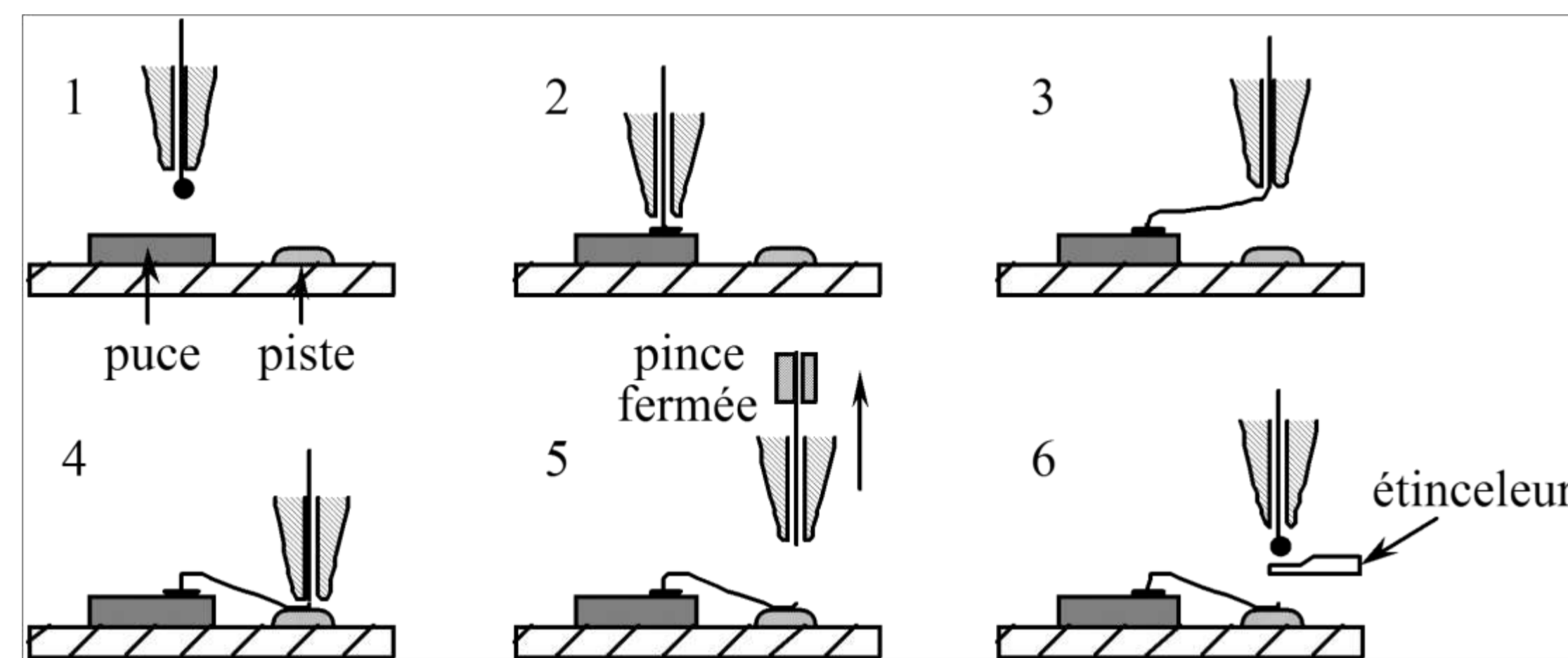


Capillaire Ball

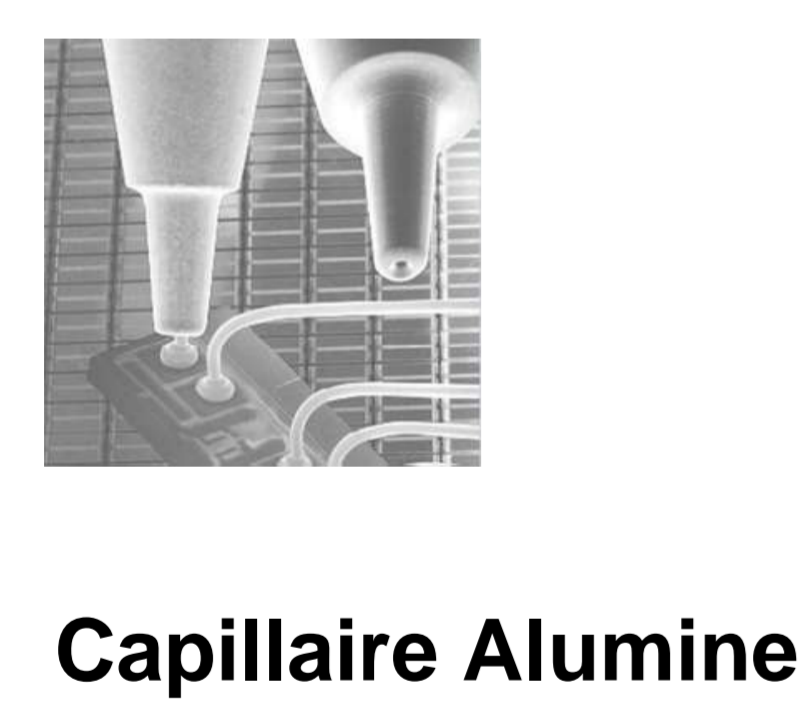
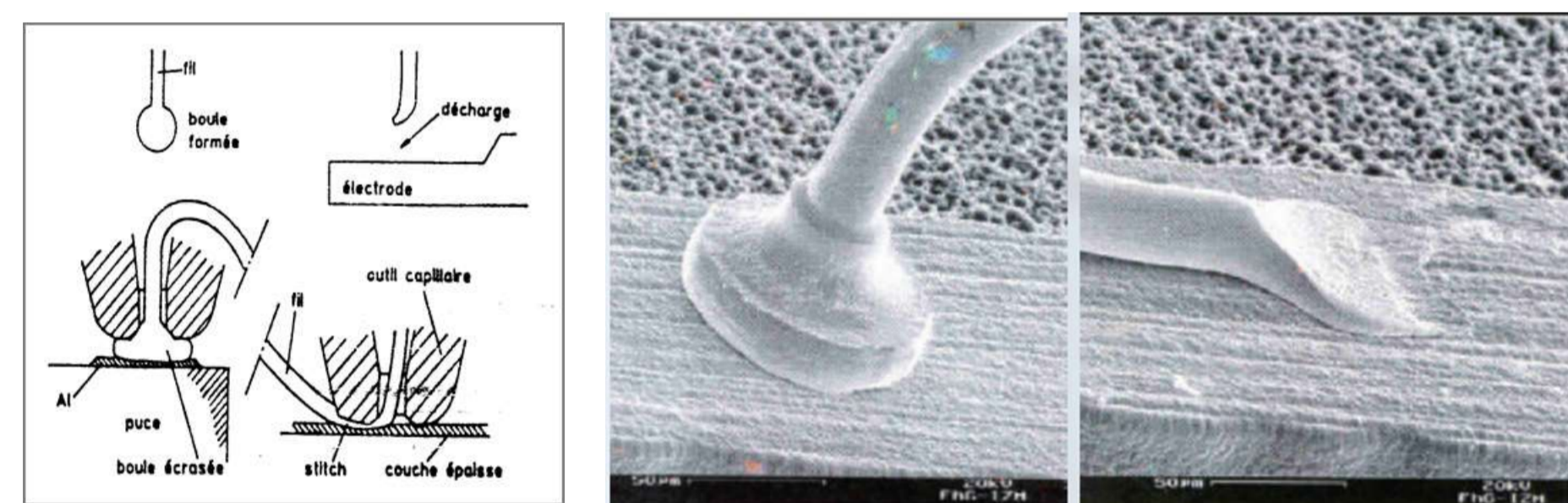


Outil Wedge

Ball-stitch



Cycle de câblage



Capillaire Alumine

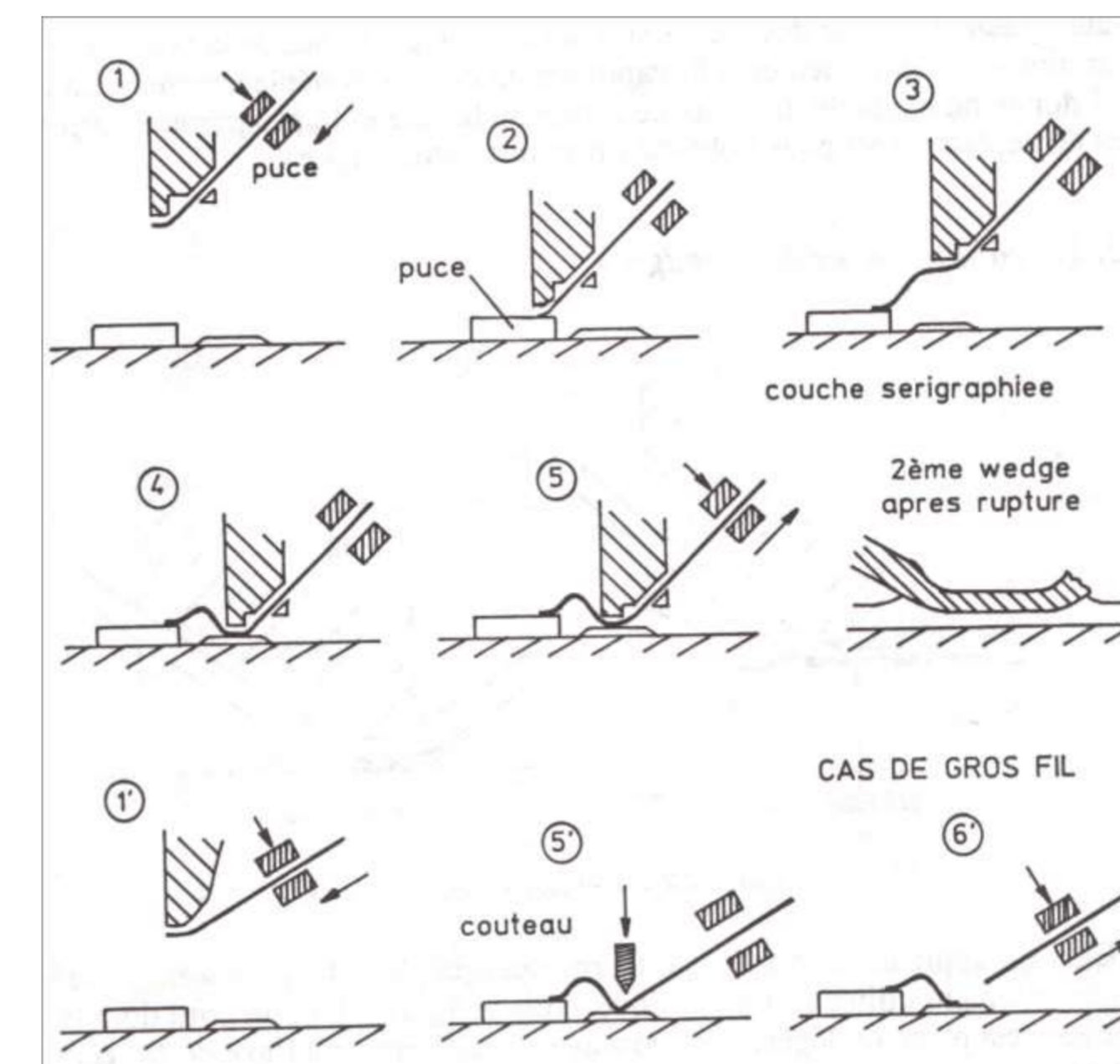


Câbleuse K&S 4524

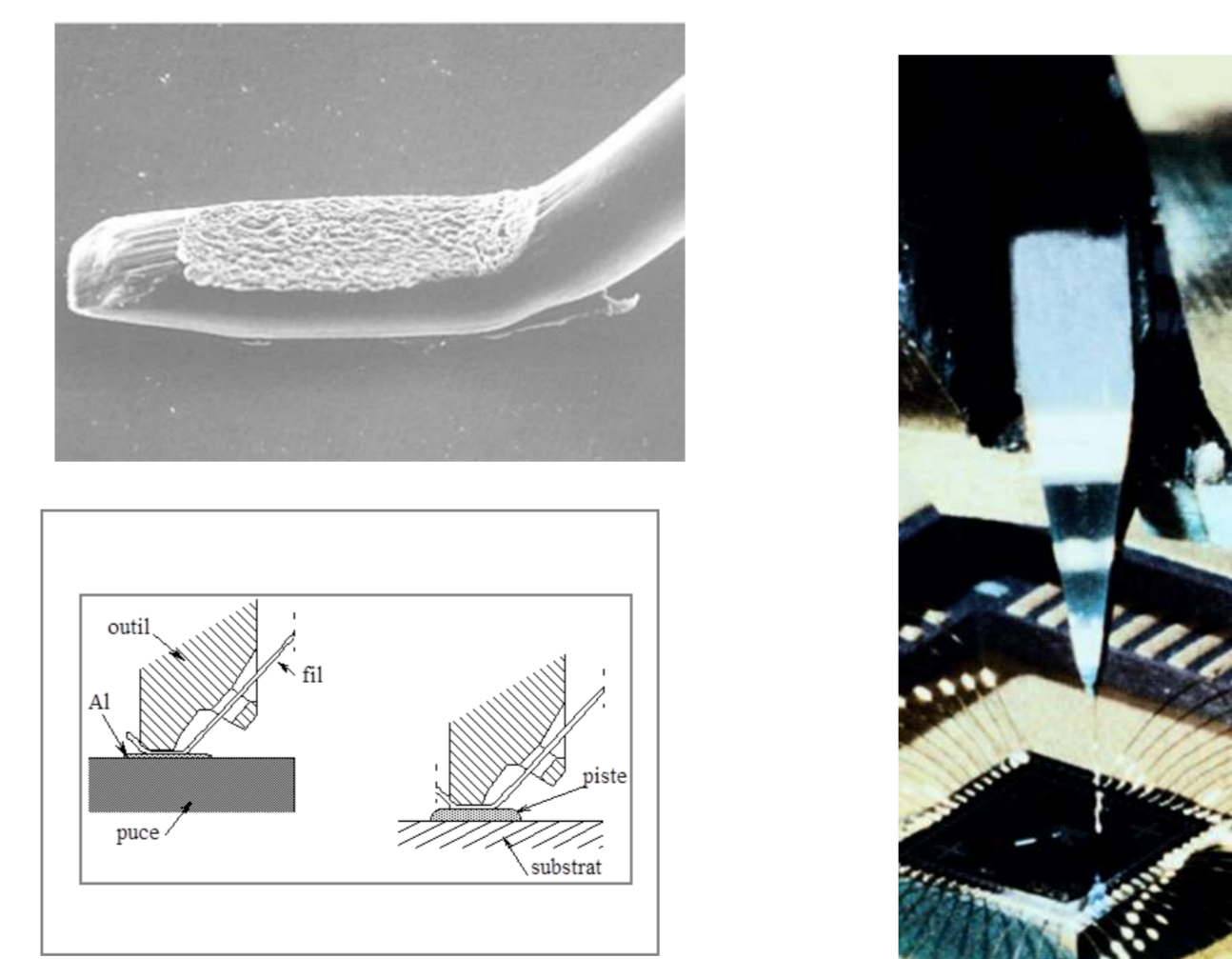
Caractéristiques

- Thermosonique – T_{amb} à 150°C
- Omni-directionnel
- Fils Au 17-33µm

Wedge-wedge



Cycle de câblage



Outil Carbure de Tungstène



Câbleuse Orthodyne
fils Al 100-300µm



Câbleuse K&S 4523

Caractéristiques

- Ultrasonique - T_{amb}
- Unidirectionnel
- Fils Al 17-33µm

